

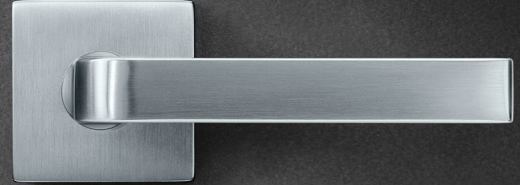
# Classics Reconceived

Uncompromising quality,  
pioneering design,  
absolute perfection

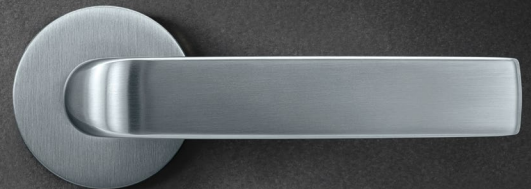
# Classics Reconceived

Great stories boldly written

**FSB 1004 by David Chipperfield**  
Page 4

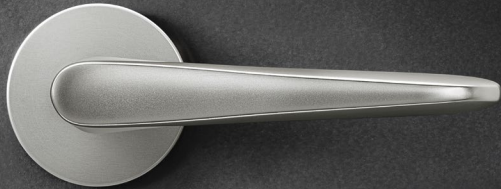


**FSB 1267 by  
Ludwig Mies van der Rohe**  
Page 10



**FSB 1144 by Jasper Morrison**

Page 6



**FSB 1242 by John Pawson**

Page 8



**FSB 1271 by Jürgen Engel**

Page 12



**FSB 1285 by Matteo Thun  
und Antonio Rodriguez**

Page 14



It all begins with the supreme quality of the Aluminium, Stainless Steel and Bronze we use and is brought to a thrilling conclusion by our loving attention to detail. Precision hand-crafting and sophisticated production technologies give rise to “functional extensions of the human hand” at Brakel blessed with unique designs “made in Germany”. Builders’ clients and design competition juries across the world greatly prize FSB.

Our design is embedded in product collections also containing plug-in handles for doors and windows, lever handles for frame doors, doorknobs, glass-door fittings, window handles and lifting/sliding door handles.

Impressed by how boldly focused we are on perfection, celebrated architects and designers develop their personal ideal notions of a lever handle to produce models that reflect their authors’ approaches to design in both form and function.

Set out over the following pages are six reconceived classics for you to take to your hearts – and hands.



# FSB 1004 by David Chipperfield

## Treading in modernist footsteps



We began working with David Chipperfield Architects early in the new millennium. The practice was fond of selecting FSB 1015 by Johannes Potente for buildings in the German-speaking world, including for instance the new building for the Folkwang Museum in Essen.

David Chipperfield approached FSB towards the end of the decade about designing his own handle range with us. The project kicked off somewhat bumpily owing to the awkward geometry of the lever handle and in particular its shank. The handle's cranking proved to be a further stumbling block.

David Chipperfield soon realized that the way to resolve the issue was to start with the crank and build the handle up from there. So he took pencil and paper and started drawing away. The upshot was the crank now familiar to us from his U-shaped frame-door lever handle FSB 1134. The rest of the story is soon told; we wanted to do homage to Modernism and specifically to Walter Gropius, Adolf Meyer and their famous Gropius handle.

Mr Chipperfield opted for the geometrical categories of square and circle. A long circular neck passes over into a shank of square cross-section that bends round to form a grip running parallel to the face of the door and tapering into a rectangular shape when viewed end-on.



## FSB 1004 by David Chipperfield

Boldly focused on clarity



The process is exactly the other way round in the case of the Gropius/Meyer handle: here, a right-angled “knee” of square cross-section emerges from a very short round neck and passes over into a circular grip.

FSB 1004 takes on a very special, distinctive charm in Bronze, the material preferred by David Chipperfield. The handle range is additionally suppliable in Aluminium and Stainless Steel.

The handle range took shape partly with the James Simon Gallery in mind, the entrance building to the Berlin Museum Island designed by David Chipperfield Architects, though visitors to other edifices built by the practice also get to finger FSB 1004 – in the Amore Pacific in Seoul and the Café-Royal in London, for instance.

### Versions

The models for standard and frame doors are supplemented by variants for emergency-exit doors, a lifting/sliding door handle, plug-in handles for doors and windows, and a glass-door fitting.

The companion FSB 1134 model features a “return to door” and has been certified pursuant to DIN EN 179.

The FSB 1004 | 1134 handle range shown over can be supplied in Aluminium, Stainless Steel and Bronze.



# FSB 1144 by Jasper Morrison

A treat for hand and eye alike



In May 1988, FSB stumbled across a door handle blueprint by the young – and then largely unknown – designer Jasper Morrison in the DOMUS magazine. We got in touch, invited Morrison to Brakel and soon realized we all got on rather well together. We marketed his S-shaped blueprint from DOMUS as FSB model 1166.

Far from leaving things at that, though, we then commissioned him to go over and reconceive door handles by Johannes Potente that had aged somewhat. Morrison made sketches, faxes were exchanged and models produced. Then he chanced upon a coach handle in a catalogue which he saw as embodying the beauty of everyday life.

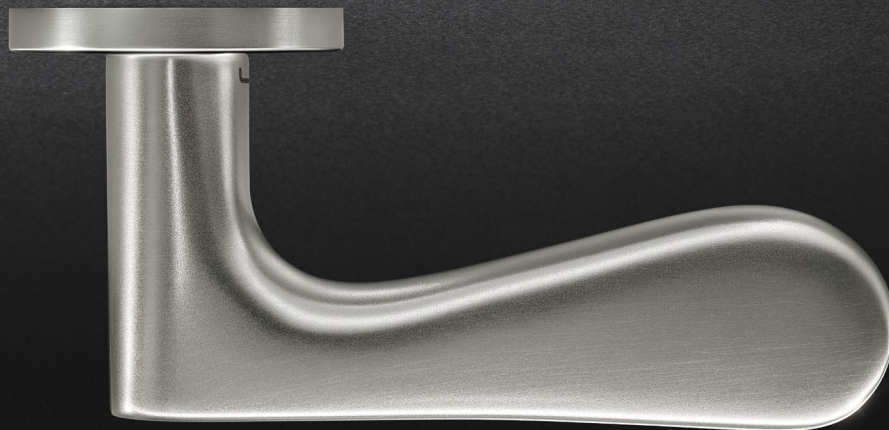
The FSB 1144 lever handle to which the ensuing development process gave rise was first presented in the spring of 1990 at the Ironmongery Fair in Cologne. FSB 1144 was a success from the word go and architects were very keen on specifying it. Major design prizes were not long in coming either. FSB's then Marketing Head Diethelm Gieffers accepted the iF Design Award from the hands of Lower Saxony's Prime Minister and subsequent Federal Chancellor Gerhard Schröder.

FSB 1144 even made it onto television. On the evening after Tomi Ungerer's "Between Marianne and Germania" exhibition was opened in Hamburg, Ungerer was a guest on the red sofa in the NDR programme "DAS". In his hands he held a walking stick with Morrison's handle as the grip. Our customers spotted this and the next day we were inundated with inquiring phone-calls.



# FSB 1144 by Jasper Morrison

Boldly embracing ideals



What had happened? Ungerer had just completed a series of advertising slots for FSB. We thanked him by presenting him with a quantity of handles and knobs he had requested as a gift. Ungerer accepted these with thanks, and walking sticks were then made out of them that could be purchased in the museum shop during the exhibition. FSB 1144 was, it goes without saying, also part of “Thingness”, the first Morrison retrospective, which ran in Belgium’s Grand Hernu exhibition building in 2015 and thereafter in Zurich, Berlin, London and Leipzig.

When we got to know the Creative Director Barbara Glasner in 2017, she informed us the “form design classics” series from the 1990s was being reissued – a project right down the street of a “publishers that produces door handles on the side”. An answer was soon found to the question of what door handle should be covered. It had to be a classic about which as many stories as possible could be told.

In October 2019, we were able to present a booklet entitled “Door handle FSB 1144 by Jasper Morrison” to the public at the Frankfurt Book Fair in the course of a presentation of books in the German Architecture Museum. The sketches, models, photos and faxes shown in the publication were laid out in a spontaneously arranged showcase exhibition that evening and admired by almost 100 members of the public. Curious? The booklet can be ordered in next to no time at [www.form.de/collections/buecher](http://www.form.de/collections/buecher).

## Versions

The models for standard and frame doors are supplemented by a window handle, and a glass-door fitting.

The FSB 1144 handle range shown over can be supplied in Aluminium and Stainless Steel.





# FSB 1242 by John Pawson

The ideal of an upright oval



Number 70, Hallesches Ufer, has been the Berlin abode of art collector Desiré Feuerle since 2016. The British architect John Pawson transformed an old air-raid shelter from World War Two there into a museum for the Feuerle Collection of ancient treasures of South-East Asia and contemporary art. He met up with FSB in search of a suitable lever handle and it was soon decided to develop a dedicated new design for this extraordinary building remit.

When we received the first sketches for his blueprint from London, we immediately realized Pawson's idea amounted to a re-interpretation of an acclaimed 20th century design, the "Reich Shape Handle" by the architect Hans Poelzig.

Poelzig had devised a handle for Broadcasting House in Berlin and the I.G. Farben building in Frankfurt in which a solid, upright-oval slab of white bronze issues from its rose in the shape of a round-cornered L. The model was produced in three different sizes by the Wehag company at the time. Pawson re-interpreted the blueprints, adapted the design to the provisions laid down in modern-day standards and nevertheless made distinct reference to the original styling of the Reich Shape Handle.

The cranked frame-door lever handle also merits special mention, differing considerably from the usual cranking on an FSB lever handle in the area of the thumbrest.





## FSB 1242 by John Pawson

Boldly revivalist



There was immediate agreement that the material for the Feuerle Collection should be Bronze.

FSB 1242 soon likewise struck a chord in places other than Berlin. Pawson's reinterpretation was, for instance, very enthusiastically received by our neighbors in Switzerland, who have come to harbour a very special love for this upright-oval handle shape.

Speaking of "upright oval", leading contemporary artist Gerhard Richter has addressed himself to the subject of doors in several of his drawings. These doors do, of course, also have handles. He drew one of his doors with an upright-oval lever handle that bears an uncanny resemblance to our FSB 1242 model.

### Versions

The models for standard and frame doors are supplemented by a lift and slide door handle, window handles, and a glass-door fitting.

The companion FSB 1243 model features a "return to door" and has been certified pursuant to DIN EN 179.

The FSB 1242 | 1243 handle range shown over can be supplied in Aluminium, Stainless Steel and Bronze.

# FSB 1267 after Ludwig Mies van der Rohe

## Our tribute to the Bauhaus master



Ludwig Mies van der Rohe developed several versions of lever handles for his building projects. As well as buildings he designed during his period as director of the Bauhaus such as Tugendhat House in Brno (1930) or Lemke House in Berlin (1932), these also included later works completed in the USA after he had begun lecturing at the Illinois Institute of Technology in Chicago. One fine example from this period is his iconic Farnsworth House (1945–1951). The great master adopted a quite different formal idiom for his final project, the New National Gallery in West Berlin (1968). He opted here for a far bulkier grip than in his previous blueprints and chose Silver Anodized Aluminium as his material.

FSB's in-house designer Hartmut Weise set himself a delightful task to mark the centennial Bauhaus celebrations in 2019. His aim was to transpose Mies van der Rohe's ideal of a lever handle into a contemporary form that would meet modern requirements. He had access to the original blueprints for Rohe's buildings in Berlin when fashioning his re-interpretation. The path Weise went down for his revamp surprised us all; he simply combined the two models involved.

Mies van der Rohe was aware that a material and the patina it acquires with use enter into a close symbiosis – and he also knew which design devices and formal idiom to select to ensure that, far from deteriorating visually with time due to the wear they suffered at their edges, his models actually became prettier.





# FSB 1267 after Ludwig Mies van der Rohe

## Boldly inspired



Weise addressed this haptic dimension of the holding process by deliberating upon various of the handle's ergonomic properties, specifically a circular neck with a flowing transition into a flat, upright oval grip, a forefinger furrow on the inside of this transitional area, and edges yielding precise clean lines. What had originally been a very marked forefinger furrow was reduced to a mere notion in Weise's reworking.

Acclaim was not long in coming. FSB 1267 – Hartmut Weise's tribute to Ludwig Mies van der Rohe – is now one of the most popular and successful products in FSB's entire repertoire. The model won the Iconic Design Award in the category "Innovative Architecture – Best of Best" in October 2019.

### Versions

The models for standard and frame doors are supplemented by a lift and slide door handle, window handles, and a glass-door fitting.

The companion FSB 1268 model features a "return to door" and has been certified pursuant to DIN EN 179.

The FSB 1267 | 1268 handle range shown over can be supplied in Aluminium, Stainless Steel and Bronze.

## FSB 1271 by Jürgen Engel

Curvaceously flat-faced yet softly rounded



The architect Jürgen Engel came up with a collection of door and window handles for FSB that are rigorously geared towards the needs of modern Civic/Commercial construction and facilitate the highest degree of visual cohesion. Our work together was marked by meticulously precise analysis and comparisons of lever-handle designs already in existence. Current models from the FSB range were examined, grasped and fitted to the doors of Engel's practice so as to test them out.

Curvaceously flat-faced at the front and softly rounded at the back, FSB 1271 stands for precision and comfort in equal measure. The virtually identical design principle informing the standard/frame-door lever handles and the window handle is particularly striking.

The product range's lean styling reduces the amount of material in use without impairing the handle's pleasant gripping volume – even heavy, large-format doors can be confidently opened.

The manifold technical requirements for fire and frame doors are compellingly met: in the case of fire-resistant Aluminium lever handles, the requisite steel core is satisfactorily enclosed. It goes without saying that FSB 1271 also conforms to all applicable standards – fitness for installation pursuant to DIN 31001 is guaranteed, for instance.

The frame-door lever handle is worthy of special note; despite being barely perceptible at first glance, its crank nevertheless fulfils the standard's provisions.





## FSB 1271 by Jürgen Engel

Boldly focused on precision



The proud news reached us from Jürgen Engel's practice in mid-2020 that FSB 1271 had won the Iconic Design Award in the category "Innovative Architecture – Best of Best".

Needless to say, it is plain to see and grasp that the handle's creator is himself convinced by his design. The doors to Jürgen Engel's practices in Berlin and Frankfurt have already been fitted with his own lever handle – and the handles in the architect's Berlin flat have also been replaced.

### Versions

The models for standard and frame doors are supplemented by a window handles, and a glass-door fitting. A lift and slide door handle can be supplied to order.

The companion FSB 1272 model features a "return to door" and has been certified pursuant to DIN EN 179.

The FSB 1271 | 1272 handle range shown over can be supplied in Aluminium and Stainless Steel.

# FSB 1285 by Matteo Thun and Antonio Rodriguez

A prime example of timeless design

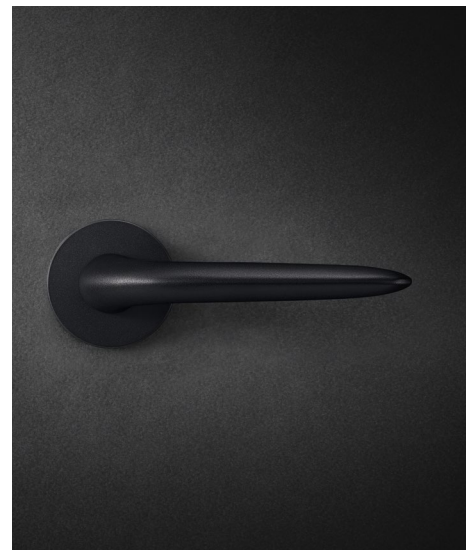


Johann Wolfgang von Goethe once said: “Grasp with your eyes and see with your fingers.” Matteo Thun is fond of citing this – especially where door handles are concerned. “We direct our attention towards whatever it is people touch, be it with their eyes or with their fingers. We have dubbed this strategy ‘Hi-Touch’”. Antonio Rodriguez adds: “The texture of a finish is very important – both in architecture and in design”.

It is accordingly no coincidence that the Italian architect Matteo Thun and his Spanish colleague Antonio Rodriguez joined with FSB to develop a handle range whose styling exudes an elegance that is as slimlined as it is unfussy. The design really comes into its own in a velvety matt finish known as “Blasted Aluminium Black Anodized”.

The FSB 1285 handle range took shape in rather dramatic manner. When FSB designer Michael Schmidt visited Matteo Thun’s Milan studio for a preliminary exchange of ideas, he was surprised to be confronted by a samples wall containing large numbers of ready-conceived specimens of lever handles – grouped into disparate, organic, integrative and geometric shapes. How on earth would it be possible to arrive at a fitting basis for working together with so much to choose from?

Michael Schmidt responded with a comparable survey of FSB handles – divided into modern, traditional, geometric and organic designs. Mutual agreement was soon reached on developing a shape that would close a gap in the FSB product range.





## FSB 1285 by Matteo Thun and Antonio Rodriguez

Boldly focused on elegance



The outcome was a very organic and yet modern handle range that fulfils the desired requirements admirably: no statement was to be made, the design was to remain as invisible as possible whilst nevertheless emanating great softness and warmth.

The formal consequences manifest themselves in no uncertain manner in a frame-door lever handle whose crank is barely discernible. The transition radius between neck and grip has been adapted in such a way that the cranked variant of the lever handle hardly differs from its non-cranked counterparts.

The FSB 1285 | 1286 handle range is rounded off by a product collection comprising coat hooks, a cabinet knob, numerals and a door viewer, making it particularly interesting for hotel projects.

### Versions

The models for standard and frame doors are supplemented by a window handles, and a glass-door fitting. A lift and slide door handle can be supplied to order.

The companion FSB 1286 model features a "return to door" and has been certified pursuant to DIN EN 179.

The FSB 1285 | 1286 handle range shown over can be supplied in Aluminium.



Franz Schneider Brakel  
North America

24 New Park Drive  
Berlin, CT 06037

Tel 203 404 4700  
Fax 203 404 4710

[www.fsbna.com](http://www.fsbna.com)  
[info@fsbna.com](mailto:info@fsbna.com)

[instagram.com/fsbnorthamerica](https://www.instagram.com/fsbnorthamerica)  
[facebook.com/fsbnorthamerica](https://www.facebook.com/fsbnorthamerica)