

# HANDCRAFTED DOORS FOR LUXURY OUTDOOR LIVING

FOLDING | SLIDING | SWING | WINDOWS



*AG Millworks*  
SINCE 1986

[agmillworks.com](http://agmillworks.com)



# ABOUT AG MILLWORKS

AG Millworks specializes in designing and manufacturing handcrafted folding, sliding and swing door systems made for luxury outdoor living. Our industry-leading designs, unmatched quality, advanced technology and superior customer service are the reasons architects, designers, builders, and homeowners choose AG Millworks for their luxury home design projects.

AG Millworks stands out in the industry as our production is not automated. All door systems are handmade with care at our factory in Ventura, California. We excel in accommodating custom requests and provide the best customer support in the industry.





NOTICE  
LADIES  
ON BEACH  
MUST WEAR  
BLOOMERS





# AG MILLWORKS ADVANTAGE

## **HANDCRAFTED LUXURY**

ALL DOOR SYSTEMS ARE HANDMADE AT OUR FACTORY IN VENTURA, CALIFORNIA. NO AUTOMATION OR ASSEMBLY LINES.

## **CUSTOM SIZES WITHOUT UP-CHARGES**

DOOR SYSTEMS ARE MADE TO ORDER. CUSTOM SIZES WILL NOT ADD EXTRA COSTS OR DELAY LEAD TIMES.

## **VARIETY OF RAIL/STILE PROFILES AND SILL OPTIONS**

SLIMLINE | ultra-modern, EURO | contemporary OR TRADITIONAL | classic PROFILES AVAILABLE.

## **SUPERIOR STRENGTH AND DEPENDABILITY**

ALL CLAD DOOR SYSTEMS HAVE LVL CORES FOR DIMENSIONAL STABILITY AND 3/16" THICK VENEER SKINS.

## **BIGGEST IN THE BUSINESS**

BIG DAYLIGHT BI-FOLD PANEL SIZES UP TO 4' WIDE AND 13' TALL.

## **PRE-DRILLED INSTALLATION HOLES**

ALL BI-FOLD HEADER INSTALLATION HOLES ARE PRE-DRILLED AND ALL HARDWARE IS INCLUDED.

## **FURNITURE QUALITY FINISH**

MULTI-COAT PAINT PROCESS FOR A BEAUTIFUL LONG-LASTING FINISH.

## **DURABLE KYNAR 700 EXTERIOR PAINT**

RESISTS WEATHER AND WEAR.

## **TITLE 24 PRESCRIPTIVE COMPLIANT**

MEETS LATEST ENERGY EFFICIENCY STANDARDS. NFRC CERTIFIED.

## **FAST LEAD TIMES**

FAST BUILD TIMES, SO YOU DON'T HAVE TO WAIT.

## **WE HANG AND SWING EVERY DOOR IN OUR FACTORY**

UNITS ARE BUILT, HUNG, AND SWUNG TO ENSURE THE FRAME, PANELS, AND HARDWARE ARE PRECISE AND FUNCTIONAL.

## **FACTORY INSTALLED RETRACTABLE SCREENS**

OPTIONAL RETRACTABLE ACCORDION SCREEN IS FACTORY INSTALLED AND INTEGRATED INTO THE JAMB.

## **PRE-BUILT FRAMES**

WE DELIVER DOOR SYSTEM FRAMES FULLY ASSEMBLED TO SAVE TIME, SPACE, AND MONEY.

## **JOB-SITE DELIVERY**

FOR A MINOR CHARGE, WE WILL DELIVER YOUR SYSTEMS, ELIMINATING THE NEED FOR HANDLING.

## **10-YEAR WARRANTY**

10-YEAR LIMITED WARRANTY ON ALL ALUMINUM CLAD DOORS.





# ENERGY PERFORMANCE

AG MILLWORKS DOOR SYSTEMS MEET OR BEAT CALIFORNIA'S BUILDING ENERGY EFFICIENCY STANDARDS.

## SLIMLINE | ultra-modern BI-FOLD DOORS

With LoE 366/Argon IG (Dual Glaze)

SPECIES/TYPE	U-FACTOR	SHGC
Clad/Wood	.29	.21

## SLIMLINE | ultra-modern SLIDING DOORS

With LoE 366/Argon IG (Dual Glaze)

SPECIES/TYPE	U-FACTOR	SHGC
Clad/Wood	.30	.21

## SLIMLINE | ultra-modern FRENCH DOORS (IN-SWING)

With LoE 366/Argon IG (Dual Glaze)

SPECIES/TYPE	U-FACTOR	SHGC
Clad/Wood	.29	.20

## SLIMLINE | ultra-modern FRENCH DOORS (OUT-SWING)

With LoE 366/Argon IG (Dual Glaze)

SPECIES/TYPE	U-FACTOR	SHGC
Clad/Wood	.29	.21

## EURO | contemporary BI-FOLD DOORS

With LoE 366/Argon IG (Dual Glaze)

SPECIES/TYPE	U-FACTOR	SHGC
Clad/Wood	.30	.19
All Wood	.28	.19
Accoya Wood	.27	.19

## EURO | contemporary SLIDING DOORS

With LoE 366/Argon IG (Dual Glaze)

SPECIES/TYPE	U-FACTOR	SHGC
Clad/Wood	.30	.21
All Wood	.27	.21
Accoya Wood	.26	.21

## EURO | contemporary FRENCH DOORS (IN-SWING)

With LoE 366/Argon IG (Dual Glaze)

SPECIES/TYPE	U-FACTOR	SHGC
Clad/Wood	.30	.19
All Wood	.27	.19
Accoya Wood	.26	.19

## EURO | contemporary FRENCH DOORS (OUT-SWING)

With LoE 366/Argon IG (Dual Glaze)

SPECIES/TYPE	U-FACTOR	SHGC
Clad/Wood	.30	.20
All Wood	.28	.20
Accoya Wood	.27	.20



# FOLDING DOOR SYSTEMS

AG MILLWORKS FOLDING SYSTEMS can dramatically expand your living space, opening entire walls to the outdoors as they fold completely out of the way. Our novel design options create amazing folding door systems that will compliment any space.

Custom-crafted with the highest quality materials, AG Millworks builds folding door systems with innovative functionality. By choosing to create a system that includes an odd number of doors in any direction, you can decide to have a convenient **"daily door"** that swings open easily without needing to open and fold the entire door system.

Our expansive and innovative design, luxury craftsmanship, energy performance, and unmatched customer support makes AG Millworks the natural choice for folding door systems.





## FEATURES

- ALUMINUM CLAD/WOOD, ALL-WOOD, OR SOLID ACCOYA
- 19 DIFFERENT WOOD SPECIES
- CUSTOM SIZES AVAILABLE
- FACTORY INSTALLED SCREEN SYSTEM
- MULTIPLE CONFIGURATIONS UP TO 64'W
- BIG DAYLIGHT PANELS - UP TO 4'W AND 13'H
- AVAILABLE IN SLIMLINE | ultra-modern, EURO | contemporary OR TRADITIONAL | classic STILES AND RAILS
- TITLE 24 COMPLIANT ENERGY PERFORMANCE
- MULTIPLE HARDWARE OPTIONS AND FINISHES
- MULTI-POINT LOCKING SYSTEM
- RAISED, FLUSH, AND ADA SILL OPTIONS
- TOP HUNG FOR EFFORTLESS OPERATION
- OPTIONAL TRUE AND SIMULATED DIVIDED LITES
- VARIOUS GLASS OPTIONS
- COMMERCIAL OPTIONS AVAILABLE
- CONVENIENT "DAILY DOOR" SWINGS OPEN WITHOUT NEEDING TO OPEN AND FOLD THE ENTIRE DOOR SYSTEM.

## HARDWARE

AG Millworks offers an array of hardware styles and finishes that are well-designed for ease of use with durable craftsmanship for long-lasting quality. Special order options are also available.



DALLAS  
HANDLE

Available Finishes:

- Rustic Umber
- Matte Black
- Satin Nickel



VERONA  
HANDLE

Available Finishes:

- Rustic Umber
- Matte Black
- Satin Nickel
- White



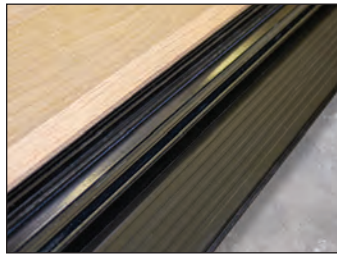
SHOOTBOLT  
HANDLE

Available Finishes:

- Bronze
- Black
- Brushed Chrome

## SILL OPTIONS

AG Millworks offers multiple sill styles to accommodate your design needs: Raised, flush, and ADA compliant sills in multiple finishes to match any space.



RAISED ALUMINUM SILL  
(SQUARE)

Available Finishes:

- Bronze Anodized
- Clear Anodized



RAISED ALUMINUM SILL  
(ROUND)

Available Finishes:

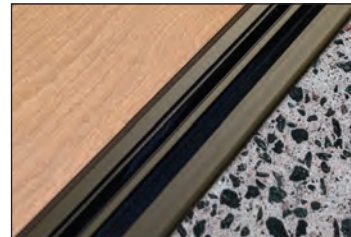
- Bronze Anodized
- Clear Anodized



ULTRA GUIDE TRACK

Available Finishes:

- Bronze Anodized
- Clear Anodized



ADA ULTRA GUIDE TRACK

Available Finishes:

- Bronze Anodized
- Clear Anodized

## SIZING & CONFIGURATIONS

Each AG Millworks folding system is custom and made-to-order. Folding systems are available up to 64' wide. Our big daylight system is the biggest in the industry: maximum panel sizes of 4' wide and 13' tall.

Folding systems are available in over 70 different configurations, up to 16 panels, 8 in each direction. Below are samples of popular configuration options.

### 2 PANELS



2L or 2R\*

### 3 PANELS



3L or 3R



2L/1R or 1L/2R

### 4 PANELS



4L or 4R\*



3L/1R or 1L/3R



2L/2R\*

### 5 PANELS



5L or 5R



4L/1R or 1L/4R



3L/2R or 2L/3R

### 6 PANELS



6L or 6R\*



5L/1R or 1L/5R



3L/3R



7L or 7R

### 7 PANELS



6L/1R or 1L/6R



5L/2R or 2L/5R



4L/3R or 3L/4R

### 8 PANELS



8L or 8R\*



7L/1R or 1L/7R



6L/2R or 2L/6R\*



5L/3R or 3L/5R



4L/4R\*

\*No access from exterior and "daily door" not available with these configurations.

## FOLDING SYSTEM MATERIAL COMPARISON

MATERIAL	CLAD/WOOD	ALL-WOOD	SOLID ACCOYA WOOD
<b>PANEL CONSTRUCTION</b>	ALUMINUM CLAD EXTERIOR WITH LVL CORE AND WOOD INTERIOR	WOOD EXTERIOR WITH LVL CORE AND WOOD INTERIOR	SOLID ACCOYA WOOD
U-VALUE <b>SLIMLINE STILES &amp; RAILS</b> LoE 366 WITH ARGON IG	.29	N/A	N/A
U-VALUE <b>EURO STILES &amp; RAILS</b> LoE 366 WITH ARGON IG	.30	.28	.27
U-VALUE <b>TRADITIONAL STILES &amp; RAILS</b> LoE 366 WITH ARGON IG	.31*	.28	.27
<b>PANEL THICKNESS</b>	2-1/4"	2-1/4"	2-1/4"
<b>STILES &amp; RAILS OPTIONS</b>	<p>SLIMLINE ultra-modern 2-1/2" Stiles &amp; Rails with 3-7/16" Lock Stile</p> <p>EURO contemporary 3-7/16" Stiles &amp; Rails</p> <p>TRADITIONAL classic 4-3/4" Top Rail/Stiles with 7" Bottom Rail option</p>	<p>SLIMLINE ultra-modern 2-1/2" Stiles &amp; Rails with 3-7/16" Lock Stile</p> <p>EURO contemporary 3-7/16" Stiles &amp; Rails</p> <p>TRADITIONAL classic 4-3/4" Top Rail/Stiles with 7" Bottom Rail option</p>	<p>SLIMLINE ultra-modern 2-1/2" Stiles &amp; Rails with 3-7/16" Lock Stile</p> <p>EURO contemporary 3-7/16" Stiles &amp; Rails</p> <p>TRADITIONAL classic 4-3/4" Top Rail/Stiles with 7" Bottom Rail option</p>
<b>DIVIDED LITES</b>	SIMULATED DIVIDED LITES 5/8", 7/8", OR 1-1/8"	TRUE DIVIDED LITES 1-3/4" (Custom sizes available)	TRUE DIVIDED LITES 1-3/4" (Custom sizes available)
<b>STICKING TYPE</b>	SQUARE, BEVEL OR OVOLO	SQUARE, BEVEL OR OVOLO	SQUARE, BEVEL OR OVOLO
<b>AVAILABLE WOOD SPECIES</b>	19 WOOD SPECIES (See page 20)	19 WOOD SPECIES (See page 20)	ACCOYA
<b>PREFINISH AVAILABLE</b> (Prime, Paint or Stain)	YES	YES	YES
<b>LOCKING MECHANISM</b>	MULTI-POINT LOCK	MULTI-POINT LOCK	MULTI-POINT LOCK
<b>WARRANTY</b>	10-YEAR LIMITED WARRANTY	1-YEAR LIMITED WARRANTY	5-YEAR LIMITED WARRANTY

\*Add i89 coating to meet CA Title 24 Compliant Energy Performance



# SLIDING DOOR SYSTEMS

AG MILLWORKS SLIDING DOOR SYSTEMS combine luxury craftsmanship with advanced technology. From ultra-modern to classic styles, our design possibilities allow you to create custom sliding doors that will enhance any home's aesthetic.

Sliding door systems are a great space-saving option. They stack behind each other on one side of an opening or into a concealed pocket in the wall. Our doors are built with superior quality materials and state-of-the-art technology to create a custom sliding door system with great energy performance that will last for generations.

Choose Multi-Slide doors that seamlessly glide with wheels that are always engaged, ready to roll, and are a practical solution for most openings. You can also opt for Lift & Slide doors featuring European engineering that enables you to slide open entire walls with incredible ease at the turn of a handle.

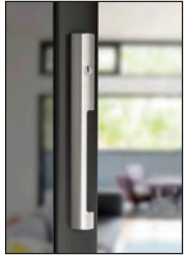


## FEATURES

- POCKETING AND NON-POCKETING SYSTEMS
- ALUMINUM CLAD/WOOD, ALL-WOOD, OR SOLID ACCOYA
- 19 DIFFERENT WOOD SPECIES
- CUSTOM SIZES AVAILABLE
- FACTORY INSTALLED SCREEN SYSTEM
- AVAILABLE IN SLIMLINE | ultra-modern, EURO | contemporary OR TRADITIONAL | classic STILES AND RAILS
- TITLE 24 COMPLIANT ENERGY PERFORMANCE
- PREPPED FOR AUTOMATION
- MULTIPLE HARDWARE OPTIONS AND FINISHES
- MULTI-POINT LOCKING SYSTEM
- RAISED AND FLUSH TRACK OPTIONS
- OPTIONAL TRUE AND SIMULATED DIVIDED LITES
- VARIOUS GLASS OPTIONS
- COMMERCIAL OPTIONS AVAILABLE

## HARDWARE

AG Millworks offers an array of hardware styles and finishes that are well-designed for ease of use with durable craftsmanship for long-lasting quality. Special order options are also available.



DALLAS HANDLE

Available Finishes:

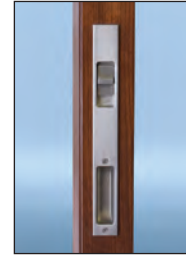
- Rustic Umber
- Matte Black
- Satin Nickel



VERONA HANDLE

Available Finishes:

- Rustic Umber
- Matte Black
- Satin Nickel
- White
- Polished Brass
- Oil Rubbed Bronze
- Polished Chrome



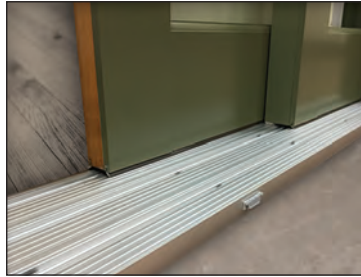
ONE PIECE TRUTH FLUSH MOUNT

Available Finishes:

- Bronze PVD\*
- Matte Black
- Satin PVD\*

\*PVD is an environmentally friendly coating process with no hazardous by-products resulting in brilliant finishes with excellent wear and corrosion resistance.

## SILL OPTIONS



### SILLution SLIDING DOOR THRESHOLD

Our Sliding Door Systems come standard with our SILLution threshold made from heavy-duty extruded aluminum, providing a flat and smooth surface so doors slide with ease. The SILLution's superior design drives water through weep holes so it can escape through the exit gates and provides easy up-keep without raised tracks to trip over or unsightly snap-on track cover. Available in Bronze Anodized and Clear Anodized finishes.



### STAINLESS STEEL RECESSED TRACK

The AG Millworks recessed track system for Multi-Slide doors is made of premium quality, heavy-gauge stainless steel welded into a customized configuration. When fully installed, the sturdy track system lives underground with only a 1/4" high stainless-steel track visible above the finished floor, so there is no raised sill to step over.

*\*Recommended for low or no-exposure environments only. No warranty for water penetration. Up-charge for the Stainless Steel Recessed Track applies.*

## SIZING & CONFIGURATIONS

Each AG Millworks Sliding System is custom and made-to-order. Sliding panels are available up to 8' wide x 12' tall, with systems offered up to 80 ft. Below are samples of popular configuration options.

### POCKETING

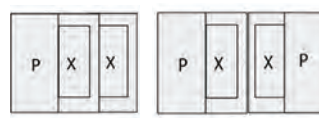


P=POCKET  
X=OPERABLE

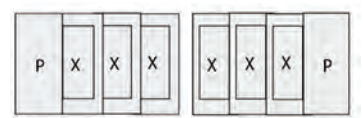
#### 1 PANEL



#### 2 PANELS



#### 3 PANELS



#### 4 PANELS



#### 6 PANELS



### NON-POCKETING



O=FIXED  
X=OPERABLE

#### 2 PANEL



#### 3 PANELS



#### 4 PANELS



## SLIDING SYSTEM MATERIAL COMPARISON

MATERIAL	CLAD/WOOD	ALL-WOOD	SOLID ACCOYA WOOD
<b>PANEL CONSTRUCTION</b>	ALUMINUM CLAD EXTERIOR WITH LVL CORE AND WOOD INTERIOR	WOOD EXTERIOR WITH LVL CORE AND WOOD INTERIOR	SOLID ACCOYA WOOD
U-VALUE <b>SLIMLINE STILES &amp; RAILS</b> LoE 366 WITH ARGON IG	.30	N/A	N/A
U-VALUE <b>EURO STILES &amp; RAILS</b> LoE 366 WITH ARGON IG	.30	.27	.26
U-VALUE <b>TRADITIONAL STILES &amp; RAILS</b> LoE 366 WITH ARGON IG	.30	.27	.26
<b>PANEL THICKNESS</b>	2-1/4"	2-1/4"	2-1/4"
<b>STILES &amp; RAILS OPTIONS</b>	<p>SLIMLINE ultra-modern 2-1/2" Stiles &amp; Rails with 3-7/16" Lock Stile option</p> <p>EURO contemporary 3-7/16" Stiles &amp; Rails</p> <p>TRADITIONAL classic 4-3/4" Top Rail/Stiles with 7" Bottom Rail option</p>	<p>SLIMLINE ultra-modern 2-1/2" Stiles &amp; Rails with 3-7/16" Lock Stile option</p> <p>EURO contemporary 3-7/16" Stiles &amp; Rails</p> <p>TRADITIONAL classic 4-3/4" Top Rail/Stiles with 7" Bottom Rail option</p>	<p>SLIMLINE ultra-modern 2-1/2" Stiles &amp; Rails with 3-7/16" Lock Stile option</p> <p>EURO contemporary 3-7/16" Stiles &amp; Rails</p> <p>TRADITIONAL classic 4-3/4" Top Rail/Stiles with 7" Bottom Rail option</p>
<b>DIVIDED LITES</b>	SIMULATED DIVIDED LITES 5/8", 7/8", OR 1-1/8"	TRUE DIVIDED LITES 1-3/4" (Custom sizes available)	TRUE DIVIDED LITES 1-3/4" (Custom sizes available)
<b>STICKING TYPE</b>	SQUARE, BEVEL OR OVOLO	SQUARE, BEVEL OR OVOLO	SQUARE, BEVEL OR OVOLO
<b>AVAILABLE WOOD SPECIES</b>	19 WOOD SPECIES (See page 20)	19 WOOD SPECIES (See page 20)	ACCOYA
<b>PREFINISH AVAILABLE</b> (Prime, Paint or Stain)	YES	YES	YES
<b>LOCKING MECHANISM</b>	MULTI-POINT LOCK	MULTI-POINT LOCK	MULTI-POINT LOCK
<b>WARRANTY</b>	10-YEAR LIMITED WARRANTY	1-YEAR LIMITED WARRANTY	5-YEAR LIMITED WARRANTY



# SWING DOOR SYSTEMS

AG MILLWORKS FRENCH SWING DOOR SYSTEMS bring timeless elegance, unique sophistication, and a stately architectural element to any space. Whether you choose in-swing or out-swing, ultra-modern, contemporary, or classic, our inventive style options allow you to create custom French Swing doors that will beautifully compliment any decor.

As experts in handcrafting luxury swing systems, we use only the highest quality materials to craft our doors, guaranteeing you a perfect system that will transform your space. Choose AG Millworks for quality products, excellent workmanship, and exceptional customer service for your swing door system.





## FEATURES

- ALUMINUM CLAD/ WOOD, ALL-WOOD, OR SOLID ACCOYA
- 19 DIFFERENT WOOD SPECIES
- CUSTOM SIZES AVAILABLE
- FACTORY INSTALLED SCREEN SYSTEM OPTION
- AVAILABLE IN SLIMLINE | ultra-modern, EURO | contemporary OR TRADITIONAL | classic STILES AND RAILS
- MULTIPLE HARDWARE OPTIONS AND FINISHES
- TITLE 24 COMPLIANT ENERGY PERFORMANCE OPTIONS AVAILABLE

SWING SYSTEM MATERIAL COMPARISON	CLAD/WOOD	ALL-WOOD	SOLID ACCOYA WOOD
<b>PANEL CONSTRUCTION</b>	ALUMINUM CLAD EXTERIOR, WOOD INTERIOR PANEL	SOLID WOOD PANEL	SOLID ACCOYA WOOD PANEL
U-VALUE <b>SLIMLINE STILES &amp; RAILS</b> LoE 366 WITH ARGON IG	In-swing .29 Out-swing .29	N/A N/A	N/A N/A
U-VALUE <b>EURO STILES &amp; RAILS</b> LoE 366 WITH ARGON IG	In-swing .30 Out-swing .30	.27 .28	.26 .27
U-VALUE <b>TRADITIONAL STILES &amp; RAILS</b> LoE 366 WITH ARGON IG	In-swing .30 Out-swing .32*	.28 .28	.27 .27

\*Add i89 coating to meet CA Title 24 Compliant Energy Performance



# FOLDING WINDOW SYSTEMS

AG MILLWORKS WINDOW SYSTEMS are handcrafted and made-to-order. Looking to create a pass-through window for the ultimate entertaining prowess? We've got you covered. With options to match any of our Bi-fold, Sliding or Swing Door Systems, from ultra-modern to classic, our design options allow you to create custom bi-fold window systems that will transform your space into an indoor/outdoor paradise.

Providing outstanding workmanship and quality products, AG Millworks takes pride in delivering the best folding window systems in the business.

## RADIUS BI-FOLD SYSTEMS

We can build radius folding door or window systems to meet your custom design needs. These systems are unique, innovative, and slide open and closed smoothly on a radius track.



## WINDOW/DOOR COMBINATIONS

When a window and door system connect at the center, your walls literally disappear. Our window/door combination systems connect a folding pass-through window system with a folding door system.



## FEATURES

- ALUMINUM CLAD/ WOOD, ALL-WOOD, OR SOLID ACCOYA
- 19 DIFFERENT WOOD SPECIES
- CUSTOM SIZES AVAILABLE
- FACTORY INSTALLED SCREEN SYSTEM
- AVAILABLE IN SLIMLINE | ultra-modern, EURO | contemporary OR TRADITIONAL | classic STILES AND RAILS
- MULTIPLE HARDWARE OPTIONS AND FINISHES
- TITLE 24 COMPLIANT ENERGY PERFORMANCE OPTIONS AVAILABLE

WINDOW SYSTEM MATERIAL COMPARISON	CLAD/WOOD	ALL-WOOD	SOLID ACCOYA WOOD
PANEL CONSTRUCTION	ALUMINUM CLAD EXTERIOR, WOOD INTERIOR PANEL	SOLID WOOD PANEL	SOLID ACCOYA WOOD PANEL
U-VALUE SLIMLINE STILES & RAILS LoE 366 WITH ARGON IG	.29	N/A	N/A
U-VALUE EURO STILES & RAILS LoE 366 WITH ARGON IG	.30	.28	.27



### ZERO CORNER SYSTEMS

Zero corner systems can turn any dark corner into a light-filled entertainment space and can create a wide-open, panoramic view with no supporting post at the corner. This configuration is created when two folding or sliding systems meet at 90°.

### DIVIDED LITES

Simulated divided lites for clad/wood systems available in 5/8", 7/8", or 1-1/8" widths.  
True divided lites for solid accoya and all-wood systems available in 1-3/4" widths.





### **TRANSOM/BI-FOLD, SLIDER OR FRENCH SWING COMBINATIONS**

Our innovative transoms are handcrafted to match your folding door system without the risk of deflection. We can also build transoms to match the ones already in your home.

### **RETRACTABLE ACCORDION SCREENS**

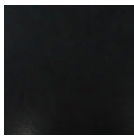
We are the only manufacturer who factory installs retractable accordion screens and fully integrates them into the door jamb. When extended, they protect your home from unwanted insects; when retracted, they disappear almost completely from view. Screens can also be pocketed inside the jamb to remain entirely out of sight. Made of polyester mesh that slides smoothly. Available on all door and window systems (except in-swing French door systems).



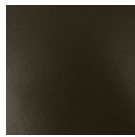


## STANDARD CLAD COLORS

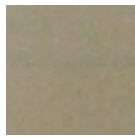
Available for aluminum clad/wood systems. Meets AAMA 2605. (Colors may vary due to printing process).



CARBON BLACK



ESPRESSO BROWN



SANDCASTLE TAN



LINEN WHITE



CLEAR ANODIZED

## CUSTOM CLAD COLORS

We have unlimited custom colors available and we'll match any manufacturer's exterior clad color to ensure a consistent look throughout your home.

## WOOD SPECIES

- CLEAR ALDER
- KNOTTY ALDER
- CLEAR CEDAR
- KNOTTY CEDAR
- DOUGLAS FIR
- HAND-MATCHED DOUGLAS FIR
- NORTH AMERICAN RED OAK
- NORTH AMERICAN WHITE OAK
- RIFT SAWN WHITE OAK
- QUARTER SAWN WHITE OAK
- AFRICAN MAHOGANY
- GENUINE MAHOGANY
- SIPO MAHOGANY
- SAPELE MAHOGANY
- CHERRY
- WALNUT
- ACCOYA (paint or stain grade. Solid wood only)
- BASS (paint or stain grade)
- PINE (paint or stain grade)





## STILES AND RAILS

AG Millworks offers three profile variations for your door panels: Slimline for the ultra-modern vibe; Euro is a contemporary look; and Traditional offers classic styling.



**SLIMLINE** | ultra-modern  
2-1/2" Stiles & Rails  
with 3-7/16" Lock Stile



**EURO** | contemporary  
3-7/16" Stiles & Rails



**TRADITIONAL** | classic  
4-3/4" Top Rail/Stiles with  
7" Bottom Rail option

## WARRANTY

Clad/Wood Systems: 10-year limited warranty

Solid Accoya Wood Systems: 5-year limited warranty

All-Wood Systems: 1-year limited warranty, with minimum overhang requirements



See [agmillworks.com/warranty](http://agmillworks.com/warranty) for full details.



*AG Millworks*  
SINCE 1986

Handcrafted Doors for Luxury Outdoor Living



©2021 AG Millworks, Inc.

agmillworks.com | 800.559.9995