

ALL-INCLUSIVE

DESIGN, SECURITY, PERFORMANCE



GROKE
MODERN ENTRY DOORS



A MODERN GROKE ALUMINUM ENTRY DOOR

A SUPERIOR ALTERNATIVE TO FIBERGLASS, STEEL OR WOOD DOORS.

DESIGN

Choose among 24 Aluminum Designer Doors with door slab covered on both sides (Premium) or with Infill Panel (Standard) in 7 fashionable colors.

ENERGY EFFICIENCY

Groke entry doors U-Factor Ratings range from .257 all the way down to an impressive .13

SECURITY

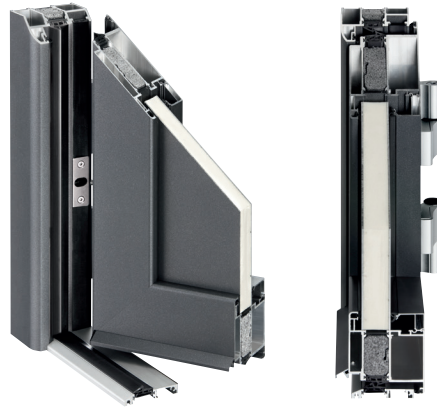
All Groke doors are engineered around a high quality multi-point locking system, and a multi-chambered aluminum profile with a 3mm wall thickness.

LOW MAINTENANCE

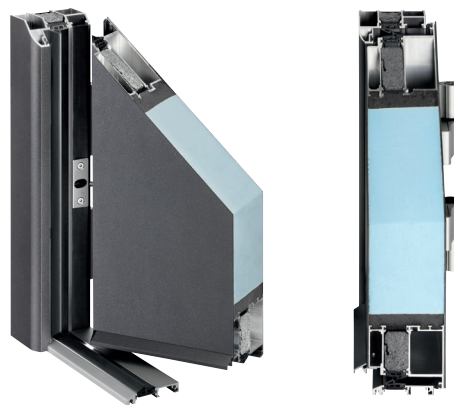
Powder coated finish for the ultimate long term durability with essentially no maintenance... no staining, no painting, ever!



STANDARD



PREMIUM





A 1
Color traffic white
Handle 18600 RAL 9016



A 2
Color anthracite grey
Handle 18600/0053



A 3
Color wine red
Handle 14030 (SG 403)



A 4
Color traffic white
Handle 14030 (SG 403)



A 11
Color traffic white
Handle 14030 (SG 403)



A 12
Color white aluminium
Handle 14030 (SG 403)



A 13
Color brown
Handle 14030 (SG 403)



A 14
Color grey aluminium
Handle 14030 (SG 403)



A 5
Color special-effect paint
Handle 14030 (SG 403)



A 6
Color wine red
Handle 14030 (SG 403)



A 7
Color brown
Handle 14030 (SG 403)



A 10
Color grey aluminium
Handle 14030 (SG 403)



A 15
Color traffic white
Handle 14030 (SG 403)



A 16
Color grey aluminium
Handle 14030 (SG 403)



A 17
Color white aluminium
Handle 14030 (SG 403)



A 12312
Color wine red
Handle 14030 (SG 403)



A 12361
Color brown
Handle 14030 (SG 403)



A 12362
Color wine red
Handle 14030 (SG 403)



A 12367
Color traffic white
Handle 14030 (SG 403)



A 12368
Color white aluminium
Handle 14030 (SG 403)



A 12422 ¹⁾
Color grey aluminium
Handle 14030 (SG 403)



A 12480
Color wine red
Handle 14030 (SG 403)



A 12660
Color anthracite grey
Handle 14030 (SG 403)



A 12951
Color traffic white
Handle 14030 (SG 403)

SIDE SECTION



Variations with fixed side sections in different designs are available.

Side section small

Dimensions up to 23.5" x 88.0"



Small side section

Side section large

Dimensions up to 39.0" x 88.0"



Large side section



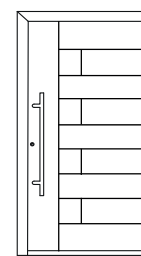
GENERAL INFORMATION

- + Maximum unit size: 45" x 88"
- + Maximum unit size for an additional charge: 51" x 94"
- + doors in all illustrations available in 7 fashion colors, single color inside and outside at the **same price** (2-color - outside: one of the 7 fashion colors; inside: RAL 9016 white - **additional charge**)
- + door panels and side panels are fitted with triple glazing high security glass
- + lever handle on both sides "additional charge". Example: Model A1
- + standard handle 14030 Example: Model A 3
- + handle 63" "additional charge" Example Model: A4

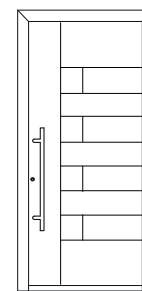
Image shows handle SG 15280 63" with straight brackets for an additional charge

NOTE

The original illustrations in the brochure correspond to a door size of 43" x 83". The ornament sizes (glass fields) remain the same height and are **not** individually adjusted. This means that the top or bottom panel edge becomes smaller or larger if the height is different.



Example height:
79"



88"

BREAK-IN PROTECTION

The illustrated doors and side panels are tested for burglar resistance in accordance with DIN EN 1627 - RC 2. Police advise break-in protection using RC 2 doors. This test confirms that there are no weak points at

door leaf, door panel, glazing, frame, lock and fitting in the complete structure. All house doors and side sections have high-quality 9.5 mm thick laminated safety glass on the outside.

STANDARD FEATURES

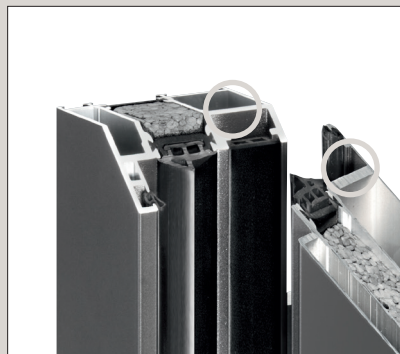


Arcade profile system
(door frame flush)

OR



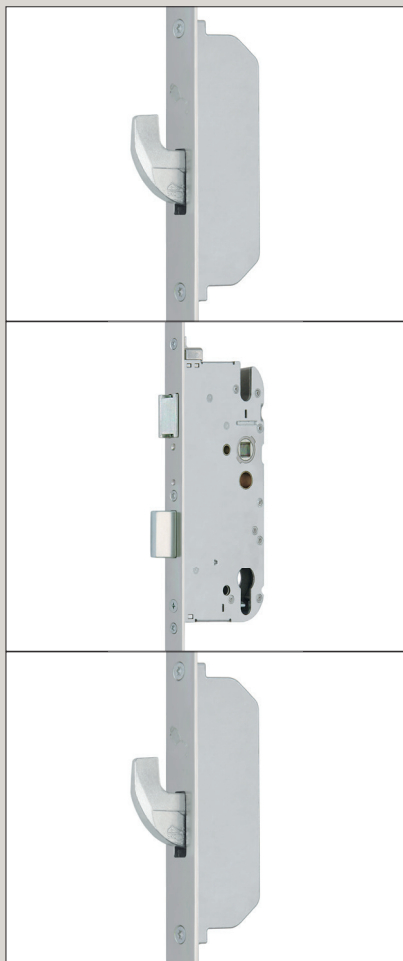
Symphonie profile system
(door frame rounded)



Wall thickness up to 3 mm for a torsion-resistant profile and a very high statical value.



Mounting groove for concealed frame fittings, no visible bolt heads, easy to install.



Three-point hook lock for optimum break-in protection



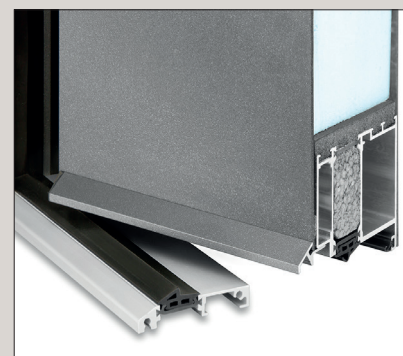
3 door hinges three-dimensionally adjustable without removing the door



Extremely stable **corner joints**, profiles screwed, glued and bolted on the mitre.



Bold lock in the top and bottom section prevent the door from being lifted (break-in protection)

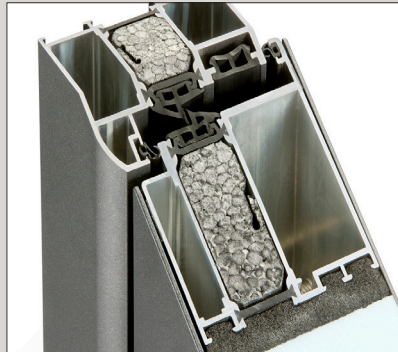


Weather bar
Deverts water away from door sill.

STANDARD FEATURES



High security stainless steel rosette



3 sealing levels guarantee the best energy efficiency



Interior lever handle: either white (image), silver anodized or dark bronze



High security cylinder 60 / 40 mm with 5 reversible keys



Glazing: Mastercarré (left) / Satinato (right)



WINE RED ²⁾
similar to RAL 3005

BROWN ²⁾
similar to RAL 8077

ANTHRACITE GREY ²⁾
similar to RAL 7016

SPECIAL-EFFECT PAINT ²⁾
DB 703

GREY ALUMINIUM ²⁾
similar to RAL 9007

WHITE ALUMINIUM ²⁾
similar to RAL 9006

TRAFFIC WHITE ¹⁾
similar to RAL 9016

Colors ¹⁾Gloss ²⁾Fine structure

Additional charge for two colored (inside RAL9016)



#) depending on the complexity of the fingerprints.

FINGERPRINT SCANNER "ENTRASYS FD"

Groke offers the **ENTRASys FD**, a reliable biometric access control system. Doors can be opened without keys or access cards.

- + simple access management (program/delete)
- + system cannot be manipulated: only "live" fingers can gain access
- + memory for approx. 50-80 fingerprints^{#)}, of which up to 9 fingerprints can have administrator rights
- + individual fingerprints can be deleted without requiring the presence of the user in question
- + including multiple locking with "GU Secury automatic lock"
- ... and many other features!



Groke Door USA
1430 West Pointe Drive
Charlotte, NC 28214



Your Groke dealer: