



PREMIUM FRONT DOORS
MADE IN GERMANY

GROKE TÜREN UND TORE GMBH
– COMMITTED TO A TRADITION
OF PERMANENT INNOVATION



GERD SCHAAF

Managing partners of the SOMMER Group.



WOLFGANG SCHANK

CEO of Groke Türen und Tore GmbH.



High-quality Groke front doors produced especially for the Chinese market with copper panels on the outside and elegant wood on the inside.

The copper and wood panel models are assembled to individual requirements.



You can find just the right model for any style of house, villa or apartment.

We offer the highest level of quality for each individually manufactured copper panel.



Aesthetics and harmony of interior design are also important considerations for us.

We have the perfect, top-quality, hand-crafted wooden interior panels for any interior décor.



In addition to an attractive selection of exterior designs, you can also choose between several high-quality woods and wood colours on the inside.

A WALK DOWN MEMORY LANE



EVENTFUL DEVELOPMENT

The global success enjoyed by Groke today has its origins in a small locksmith's shop owned by Georg Groke. On 1 April 1898, the foundation stone was laid, and quality and craftsmanship would soon bring illustrious customers to its doors. Within just a few years, Georg Groke became supplier to the Grand-Ducal court and the Badische Staatstheater. For the margrave of Baden, for example, he forged the grand iron fences for the Karlsruhe Palace gardens. Air-tight metal display cases for museums were another speciality of Groke's, with these making it to Chicago in the US by the early 1900s.

The year 1934 saw a change of generation take place in the Groke locksmith's shop. The "management" of the company, as it would be called today, passed from Otto Groke Senior to Otto Groke Junior. In the meantime, the specialist company that was known for traditional locksmith work had grown to become a business with over 30 members of staff and 2 locations. The company suffered its greatest setback at the end of the Second World War, when both Groke workshops were destroyed by bombs. In 1947, the company director passed away, and it thus fell to his wife Elisabeth to take over the Groke world of craftsmanship – a world that was very much dominated by men. However, Elisabeth not only managed to survive the difficult times of reconstruction, but also succeeded in making Groke even bigger and stronger. The business went from a handicraft business to a company specialised in metal construction, a feat that was only possible as a result of Elisabeth Groke's drive and ambition.



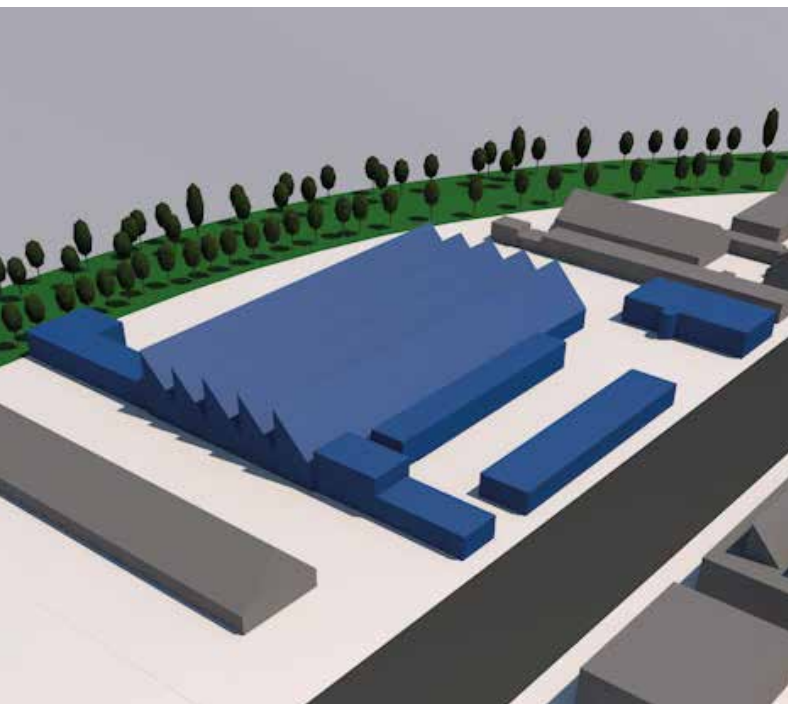
PIONEER OF THE ALUMINIUM INDUSTRY IN GERMANY

In the mid-fifties, the aluminium workshop began its conquest of the German market. Groke was one of the first companies to incorporate aluminium window frames into its product range, thus cementing its position as one of the trailblazers for a wide range of construction elements made from metal. This gave the growing business a clear specialisation in the years that followed, in that aluminium has since formed the basis for everything developed and produced by Groke.



ENORMOUS PROGRESS

During the years of the German Economic Miracle, Groke completed a breathtaking change of course when it moved from the craftsmanship stage to the industrial stage. One milestone is the year 1968, a period when industrial element construction workmanship was rigorously enforced and Groke began to trade under the name of limited partnership (Kommanditgesellschaft KG). In parallel to this, the production halls distributed across Jockgrim and Karlsruhe were consolidated to form the 10,000 m² company premises we know today on Wikingstraße.





QUANTUM LEAP: NEW PLANT IN HAGENBACH

The ever-growing popularity of the Groke front door prompted calls for an increase in production capacity. For this important expansion of industrial production capacity, the Hagenbach site on the left bank of the Rhine was chosen. The go-ahead for the production site in Hagenbach was given in November 2015.



The industrial area opened up optimum perspectives for Groke. Only about 15 km from Groke's established company premises in Karlsruhe, the first stage of construction for the new production line was completed here. This includes a state-of-the-art powder-coating facility, a cutting production facility as well as a high-bay warehouse for the aluminium profiles.



MODERN FACILITIES FOR POWDER COATING

The high-quality Groke doors are valued on the global market primarily for their creative designs and exclusive colour concepts. Since the opening of the new production facility in Hagenbach, coatings and colour-stable finishes have been incorporated into doors much more efficiently. This is thanks to a precisely designed, innovative and environmentally friendly power-coating facility that is capable of working with all RAL colours and countless colouristic shades to meet all requirements.

A LOOK AT PRODUCTION

MADE IN GERMANY





HAND-CRAFTED

Handling and fitting the high-quality copper panels requires the expertise of specially trained craftsmen with many years of experience within our company.



PRECISION

The copper panels are mechanically bolted to the door profile and in addition, secured using a specially developed bonding technique, ensuring optimum and permanent connection between panel and profile.





ROLLER HINGE

In the standard version, the copper doors are equipped with attractively designed, extremely stable and resilient barrel hinges.

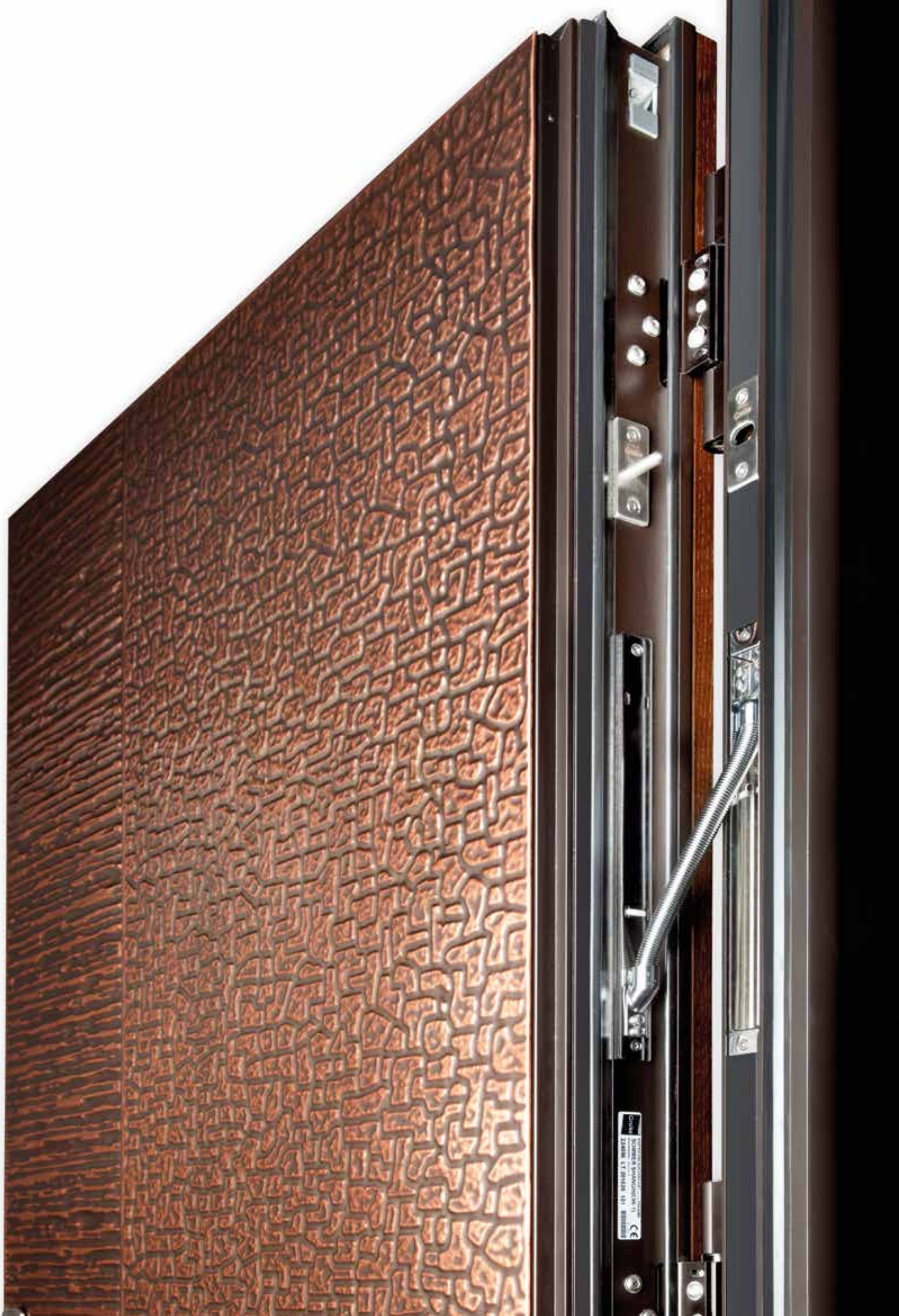
Attractive and understated design without interrupting the sealing layer. The thermal protection of the door is thus preserved. In this way, an attractive and understated design of the door mounting is combined with the tried-and-tested durability, security and resilience of the hinges.

CONCEALED HINGE

On request, we can also supply concealed internal hinges which add the perfect finishing touch to the premium door.

Ideal for flush-mounted front doors. Almost invisible when the door is closed. It meets all requirements as regards aesthetics, security and long service life.





CE
SCHÖNER & SCHÖNER
ST. MICHAEL 11
101 101 101



SECURITY

„MY HOME IS MY CASTLE“

The security of our customers and their families is very important to us. Up to 7 self-locking locks, 2 fastening bolts on the hinge side and high-quality profile cylinders with anti-drill protection guarantee:

When the door is closed - it stays closed!

PROFILE SECTION TECHNOLOGY

Groke aluminium doors impress with their stability and sturdiness thanks to an installation depth of 95 mm and material thicknesses of up to 3 mm. As a standard feature, three sealing layers along the entire edge of the door provide a high level of wind- and weather-proofing. Special insulation materials between the outer and inner panel allow optimum thermal insulation values of up to $U_d 0,71$.







920267



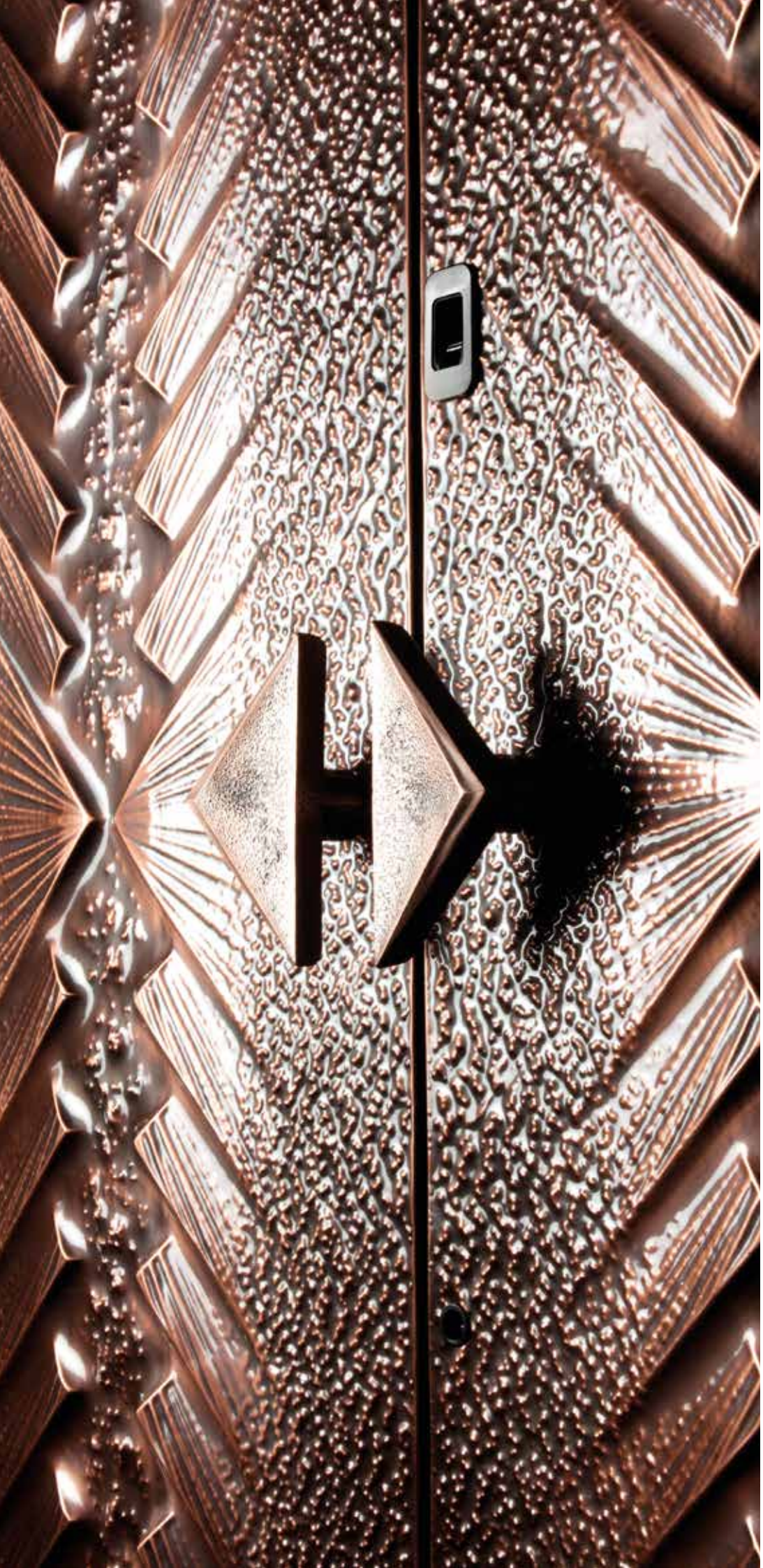


920295





920271





920268



920269



920270







ALUMINIUM FRONT DOORS

Groke offers many aluminium models in a wide range of designs and colours.

With individual handles, hinges, glass types...

WHITE ALUMINIUM
similar to RAL 9006

GREY ALUMINIUM
similar to RAL 9007

SPECIAL-EFFECT VARNISH
DB 703

ANTHRACITE GREY
similar to RAL 7016

BROWN
similar to RAL 8077

WINE RED
similar to RAL 3005

Standard colours

OPENING VIA RADIO OR FINGERPRINT

FOR EXTRA BONUS POINTS IN TERMS OF SECURITY AND CONVENIENCE

The automatically opening and closing front doors from Groke combine intelligent radio technology from SOMMER and open up new functional dimensions. Having to search through your bag for your house keys after shopping or a trip away has now become a thing of the past. At Groke, this all works via radio or fingerprint identification. Customers can

opt for a radio system with encoding technology that prevents people from listening or hacking in, or they can choose an even more individual solution with a fingerprint scanner ENTRASys FD. This system uses a state-of-the-art stripe sensor with an integrated navigation function and emergency master PIN. Up to 80 different fingerprints can be saved in the system.





IDEAL COMBINATION OF DESIGN, TECHNOLOGY AND PRICE PERFORMANCE

For many years, Groke aluminium front doors have been a permanent fixture in the top segment of the construction element market. It is not just German customers that are impressed with their “Made in Germany” quality, but also architects, planners and house owners in many countries around the world. A substantial proportion of annual production goes to international exports, giving houses in places like America and China an elegant Groke door finish.

The quality awareness that has been part and parcel of Groke since its arrival on the metal construction scene in 1898 has been maintained and cultivated until present day. For this reason, Groke doors are excellently constructed, processed and assembled. They stand for the highest level of quality, functional security, ecological benefits and reliable burglary protection in accordance with the RC2 standard. This is all ensured by strict internal standards.



MADE IN GERMANY



CONVINCING IN
DESIGN, TECHNOLOGY
AND FUNCTION.







GROKE TÜREN UND TORE GMBH | Wikingerstr. 10 | 76189 Karlsruhe
Tel.: 0721/59 82-0 | Fax: 0721/59 82-55 | info@groke.de | www.groke.de/en

A company of the SOMMER group