



ALUMINIUM FRONT DOORS
MADE IN GERMANY

GROKE TÜREN UND TORE GMBH
– COMMITTED TO A TRADITION
OF PERMANENT INNOVATION

STRONG TOGETHER SUCCESSFUL TOGETHER SHAPING THE FUTURE TOGETHER

Dear Readers,

The merger of Groke and SOMMER in 2004 saw two very passionate and technical pioneering companies join forces. At the time, Groke Türen und Tore GmbH in Karlsruhe could look back on a successful history spanning over 100 years in the metal construction industry. Groke had mainly made a name for itself as a result of its pioneering solutions in the field of aluminium construction elements. In contrast, the SOMMER

Antriebs- und Funktechnik GmbH story of success is a lot more compact and concise. Its story started in 1980 in a tiny workshop in Kirchheim/Teck, where the brilliant conceptual idea of incorporating the garage door operator into moveable gates for greater efficiency was made a reality.

The coming together of these two technological leaders thus formed the core of the SOMMER Group today – a global actor with more than 400 employees in many countries. We are currently one of a small number of leading suppliers of gate operator and radio technology operating on a global level. Ideas and impulses for Groke house doors made from aluminium also helped pave the way for this global success.

As has been the case for over 100 years, Groke products continue to be very important today. For years, they have been part of a small circle of top products for the German construction element market and are manufactured according to the strictest internal standards. Their design and safety set the bar, as do their ecological energy balance, which is based on excellent, specially developed thermally insulated aluminium profile systems from Groke.

Technical intelligence and marketable innovations have been brought to the fore by Groke. And Groke will always remain innovative. Functional milestones such as the hidden swing door operator, the automatic sliding door for barrier-free access to houses and the keyless opening of front doors via fingerprint are just some examples. Technical further developments in these focal areas as well as other valuable synergies between Groke and SOMMER will certainly follow.

None of this would have been possible without loyal customers, reliable suppliers, strong partners and our committed workforce. For this, you have our utmost gratitude and we look forward to achieving future milestones together.

Gerd Schaaf and Wolfgang Schank



GERD SCHAAF

Managing partners of the SOMMER Group.



WOLFGANG SCHANK

CEO of Groke Türen und Tore GmbH.

**A WALK DOWN
MEMORY LANE**



STRONG START

The global success enjoyed by Groke today has its origins in a small locksmith's shop owned by Georg Groke. On 1 April 1898, the foundation stone was laid, and quality and craftsmanship would soon bring illustrious customers to its doors. Within just a few years, Georg Groke became supplier to the Grand-Ducal court and the Badische Staatstheater. For the margrave of Baden, for example, he forged the grand iron fences for the Karlsruhe Palace gardens. Air-tight metal display cases for museums were another speciality of Groke's, with these making it to Chicago in the US by the early 1900s.



EVENTFUL DEVELOPMENT

The year 1934 saw a change of generation take place in the Groke locksmith's shop. The "management" of the company, as it would be called today, passed from Otto Groke Senior to Otto Groke Junior. In the meantime, the specialist company that was known for traditional locksmith work had grown to become a business with over 30 members of staff and 2 locations. The company suffered its greatest setback at the end of the Second World War, when both Groke workshops were destroyed by bombs. In 1947, the company director passed away, and it thus fell to his wife Elisabeth to take over the Groke world of craftsmanship – a world that was very much dominated by men. However, Elisabeth not only managed to survive the difficult times of reconstruction, but also succeeded in making Groke even bigger and stronger. The business went from a handicraft business to a company specialised in metal construction, a feat that was only possible as a result of Elisabeth Groke's drive and ambition.



THE DYNAMIC FIFTIES

It was all hands on deck during Germany's reconstruction period. Of course, everyone at Groke also rolled up their sleeves and got stuck in – for example in the redevelopment of Karlsruhe and its historical Botanical Gardens.



ENORMOUS PROGRESS

During the years of the German Economic Miracle, Groke completed a breathtaking change of course when it moved from the craftsmanship stage to the industrial stage. One milestone is the year 1968, a period when industrial element construction workmanship was rigorously enforced and Groke began to trade under the name of limited partnership (Kommanditgesellschaft KG). In parallel to this, the production halls distributed across Jockgrim and Karlsruhe were consolidated to form the 10,000 m² company premises we know today on Wikingerstraße.



PIONEER OF THE ALUMINIUM INDUSTRY IN GERMANY

In the mid-fifties, the aluminium workshop began its conquest of the German market. Groke was one of the first companies to incorporate aluminium window frames into its product range, thus cementing its position as one of the trailblazers for a wide range of construction elements made from metal. This gave the growing business a clear specialisation in the years that followed, in that aluminium has since formed the basis for everything developed and produced by Groke.



CREATIVE NINETIES

The fact that aluminium can be imaginative and colourful is something that can also be attributed to Groke. At the “BAU 1991” trade fair in Munich, experts from around the world were astonished when Groke presented construction elements with completely new colour accents and design ideas for the first time. This catapulted Groke to a well-earned leading position in the German aluminium industry – a position that they have confidently maintained until present day.



SMART NEW HEADQUARTERS

In 1992, the former Groke KG became the Groke GmbH & Co. KG we know today. Two years later, the company moved to a brand-new administrative building. It is a building that would be hard to miss thanks to its brilliant blue and silver aluminium façade – would we really expect anything less?



SOMMER

PARTNERING WITH SOMMER

The 1st June 2004 saw the dawning of another new era for Groke. This was the day Groke GmbH & Co. KG was acquired by the SOMMER Group. Groke thus became a partner of SOMMER Antriebs- und Funktechnik GmbH, which is based in Kirchheim/Teck, Baden-Württemberg. Within the new group of companies, Groke continued to operate as an independent company.



QUANTUM LEAP: NEW PLANT IN HAGENBACH

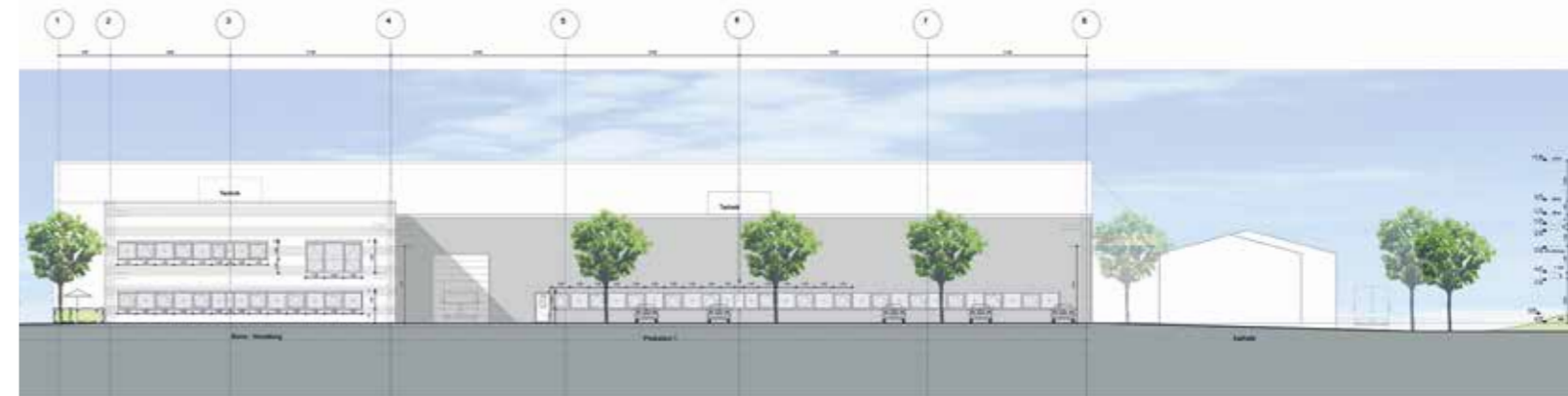
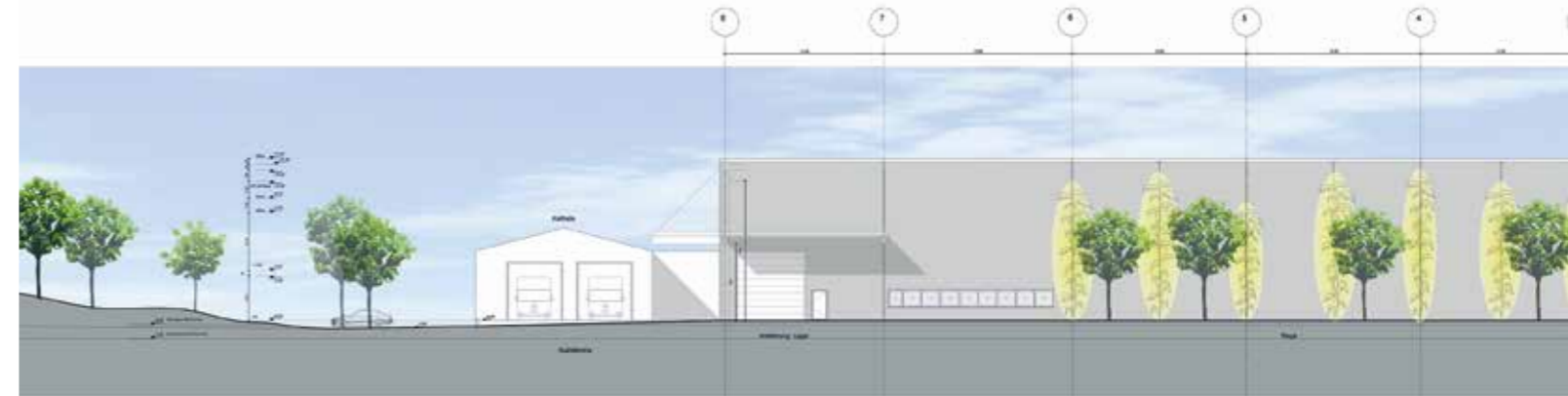
The ever-growing popularity of the Groke front door prompted calls for an increase in production capacity. For this important expansion of industrial production capacity, the Hagenbach site on the left bank of the Rhine was chosen. The go-ahead for the production site in Hagenbach was given in November 2015, and the industrial area opened up optimum perspectives for Groke. Only about 15 km from Groke's established company premises in Karlsruhe, the first stage of construction for the new production line was completed here. This includes a state-of-the-art powder-coating facility, a cutting production facility as well as a high-bay warehouse for the aluminium profiles.





ONE OF THE MOST MODERN FACILITIES FOR POWDER COATING

The high-quality Groke doors are valued on the global market primarily for their creative designs and exclusive colour concepts. Since the opening of the new production facility in Hagenbach, coatings and colour-stable finishes have been incorporated into doors much more efficiently. This is thanks to a precisely designed, innovative and environmentally friendly power-coating facility that is capable of working with all RAL colours and countless colouristic shades to meet all requirements.



A CENTRAL LOCATION

The second phase of construction in Hagenbach is already in the planning stage. In future, the extensive production of front doors, administration, logistics and storage will all be under one roof in Hagenbach.

A LOOK AT PRODUCTION

MADE IN GERMANY





1. ISOMAT

This fully automatic production module comprises the aluminium profiles developed inhouse by Groke in accordance with production orders. Here, for example, two half shells are combined to produce a frame profile in two different colours.

2. SAW MILL

First there is a quality check, which is an important intermediate stage, and then the profiles are mitred with millimetre precision for future aluminium doors with CNC saws.





3. BORING, MILLING AND PUNCHING

A separate production station ensures the optimum preparation of door profiles and door panels for installation. For this, all bores for locks, hinges and installation parts have to be made. The standard in this area is a production precision of 1/10 mm.

4. SEALS

The EPDM triple circumferential seal to protect against external weather conditions is one of the outstanding features of Groke doors. The circumferential middle seal sits between the leaf and the frame and gives Groke doors the highest level of tightness and best values in terms of Ud values. The compression seals with anti-shrink fibre prevent the natural reduction in sealing that can occur after a few years. An entire production process is dedicated to their installation.



5. HINGES

Thanks to the creativity of Groke, there is a choice of three different door hinges, i.e. between the stylish standard hinge, the elegant roller hinge and the exclusive hidden hinge for those customers with an eye for design.





6. LOCK INSTALLATION

What would a front door be without a lock? An entire assembly station is dedicated to ensuring later locking convenience and the fundamental issue of security. Every Groke door is equipped with an optimum locking mechanism. Even sophisticated technical solutions with motor lock, radio-controlled door operation and fingerprint sensors are possible. Groke doors thus reliably and confidently fulfil all the requirements of the burglary resistance class 2 (RC2). In terms of locking, the material strength of Groke profiles is 50% higher to ensure optimum mounting of locks.

7. ASSEMBLY

All the various individual parts ultimately create a complete door. Here, a special characteristic of Groke production is that the final assembly is not carried out by a machine, but manually by experienced and specialised professionals. The highest quality standards – reflecting those set by Groke – are therefore implemented on a door-for-door basis.





8. PANELS + GLASS

The last station for Groke doors in the production process is final completion with high-value, internally produced panels. These are individually selected and come with decorative glass inserts and/or applications. The panels are then carefully sealed and glued before they move on to the last step which involves mounting the door handle set and push/pull handles ... and then it's time for the final check.



9. FINAL CHECK

The people responsible for the final check at Groke must have an extremely critical eye for detail and highly sensitive fingertips. This is because the final quality check, without which the doors cannot leave the plant, is a 100% check for optics, function, completeness and workmanship. Not forgetting, of course, the check that is carried out on all the accessory parts such as the fingerprint scanners and self-locking devices.



A LOOK AT THE PRODUCTS

10. PACKAGING AND SHIPMENT

Every Groke door is packaged individually, elaborately and securely before it leaves the plant and arrives with the customer. So that delivery and agreed deadlines are always precisely adhered to, Groke has its own dedicated fleet to ensure that its products arrive on time at their destination.

AT GROKE, THE EMPHASIS IS NOT JUST ON QUALITY STANDARDS, BUT ON IMPLICITNESS.



Security pins

Hinge-plate screw in the profile chamber

Circular key rosette

3 door hinges

Weather strip

Extremely stable corner joints

ENTRAsys FD III

Interior door handle

Strike plates

Three-point hook deadlock



SECURITY PINS

- Two pin retainers in the upper and lower part of the hinge side prevent the door from being pried out of the frame in the event of a burglary



HINGES (3 PCS)

- Three-dimensional adjustment possible without removing the door leaf
- Elegant design
- Supports door leaf weighing up to 160 kg (per hinge)
- Easy door leaf removal



EXTREMELY STABLE CORNER JOINTS

- Mitred profiles are screwed, glued and bolted together



HINGE-PLATE SCREW IN THE PROFILE CHAMBER

- Does not interrupt the sealing layers
- Permanent and reliable fitting of hinges



INTERIOR DOOR HANDLE

- Attractive aluminium door handle with return mechanism on an oval Rosette



STRIKE PLATES

- Innovative strike plate to take the optional e-opener (radius latch)
- Minimised recess for an improved appearance
- Does not interrupt the sealing layer



3-POINT HOOK BOLT LOCK

- Standard feature
- Ideal for enhanced security



CIRCULAR KEY ROSETTE

- Stainless-steel circular key rosette on exterior
- Profile cylinder lock with emergency and danger function

Groke aluminium front doors impress with their stability and sturdiness thanks to a depth of 90 mm and material thicknesses of up to 3 mm. The heaviness of the door gives an impression of genuine quality. A stable joint between the frame and sill facilitates installation and ensures that the structure will be extremely resilient and durable.

As a standard feature, three sealing layers along the entire edge of the door provide a high level of wind and weather proofing. Only a tightly sealed door offers proper thermal and sound insulation, A Groke front door is as well sealed as any window.

TOP-CLASS FITTINGS



Arcade profile system
(door frame flush) **OR**



Symphonie profile system
(door frame rounded)



Wall thickness up to 3 mm provides a secure hold for lock and hinge bolts, torsion-resistant profile



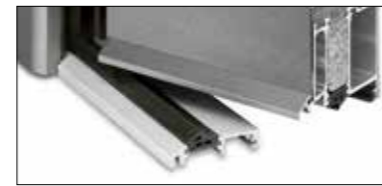
Mounting groove for hidden frame fittings, covers screws so easier to clean



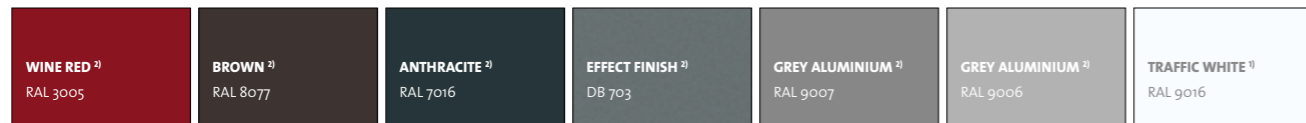
Various decorative glazings e.g. Mastercarré (left) / Satinato (right)



3 sealing levels guarantee optimum protection against heat loss as a result of draughts

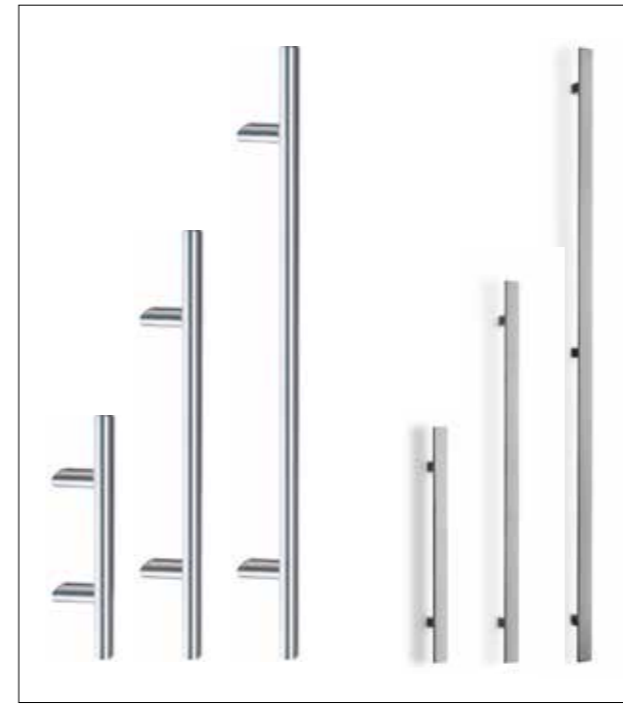


Weather strip riveted in the door leaf, water drains in front of the threshold

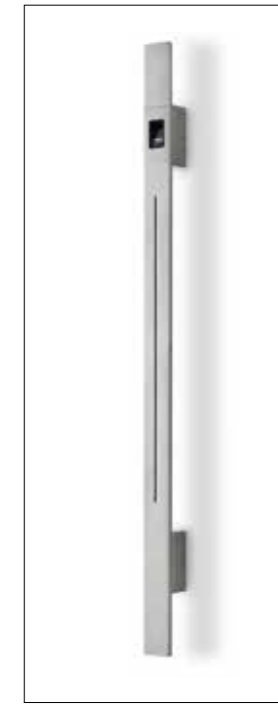


Trend colours similar to RAL colours in ¹⁾ brilliant and ²⁾ fine structure

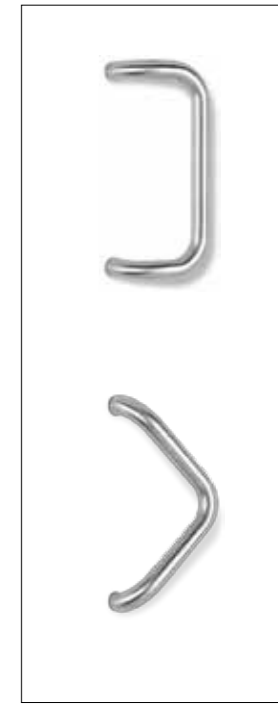
LARGE RANGE OF ACCESSORIES



Rod handles round with slanting console/straight console and angular on straight console size: 300 mm - 1,600 mm



Push/pull handle
ENTRAsys Pull
With integrated fingerprint scan



Pull/push handles
Diameter: 30 mm



Inside door handles in various designs



Knobs in various designs



IDEAL COMBINATION OF DESIGN, TECHNOLOGY AND PRICE PERFORMANCE

For many years, Groke aluminium front doors have been a permanent fixture in the top segment of the construction element market. It is not just German customers that are impressed with their “Made in Germany” quality, but also architects, planners and house owners in many countries around the world. A substantial proportion of annual production goes to international exports, giving houses in places like America and China an elegant Groke door finish.

The quality awareness that has been part and parcel of Groke since its arrival on the metal construction scene in 1898 has been maintained and cultivated until present day. For this reason, Groke doors are excellently constructed, processed and assembled. They stand for the highest level of quality, functional security, ecological benefits and reliable burglary protection in accordance with the RC2 standard. This is all ensured by strict internal standards.

MADE IN GERMANY



GROKE CLIMATE CHAMBER

Resistance to cold temperatures and extreme heat: both of these capabilities are rightly expected of Groke doors. The installed materials must therefore withstand icy temperatures and blazing heat in the Groke climate chamber, in which thermographic tests reach surface temperatures of -30°C to $+100^{\circ}\text{C}$.



GROKE INTERNATIONAL

GROKE FRONT DOORS AN INTERNATIONAL SUCCESS

Groke & SOMMER subsidiaries and branches around the world



BELGIUM

ITALY

NORWAY

RUSSIA

CZECH REPUBLIC

CHINA

FRANCE

LIECHTENSTEIN

PORTUGAL

SWEDEN

HUNGARY

UNITED ARAB EMIRATES

FINLAND

AUSTRIA

POLAND

SWITZERLAND

IRAN

USA

UK

NETHERLANDS

ROMANIA

SPAIN



GROKE EXPORT DOORS FOR CHINA

High-quality Groke front doors produced especially for the Chinese market with copper panels on the outside and elegant wood on the inside.

FRONT DOOR CONFIGURATOR

- YOUR DREAM DOOR IS JUST A FEW CLICKS AWAY

Characteristic of Groke is its creativity in design and colour, as you will see if you click on the online product configurator "Kreadoor" for front doors. Naturally, you've got loads of ideas for your new front door. But how can you turn them into reality? And do they really match your home?

With the configurator design tool, Groke gives you the opportunity to preview your dream door on your home in photo-realistic quality – from any camera angle. Using your digital template, you can virtually install a wide range of different models and modify colours and other details, right from your own computer. The configurator delivers realistic images so that you will be certain to choose the best-looking door possible.



STEP 1

Take a digital picture of the entrance to your home.



STEP 2

Use the configurator to determine which front door is the best fit for your home's entrance.



STEP 3

Select the ideal dimensions, style, colour, glass type, side sections / fanlight, and push/pull handle.



STEP 4

A simple photo composition is all it takes to visually depict your bespoke dream door right in the entrance to your home. When you're finished, you can order the door from your Groke specialist retailer using the reference number.

TESTED IN ACCORDANCE WITH THE STRICTEST STANDARDS

The European test standard EN 14351-1 defines strict standards for the performance requirements of exterior doors.

Groke doors confidently meet these standards, documented by a renowned and independent testing institute.

For the developers at Groke, however, this is not a reason to rest on their laurels, but rather to incorporate all the latest findings in quality, function and security in the future. All the latest information on test standards and test reports at Groke can be found on the Internet at: www.groke.de/downloads.

WWW.KREADOOR.DE

FROM VISION TO INNOVATION

The willingness to constantly strive for innovation is the key to be able to offer our customers even more benefits that are even more impressive in the future. Since Groke became part of the SOMMER Group, the two companies have together worked on the design, optimisation and further development of specific issues such as fingerprint, radio operation and door motorisation – and on many other areas also.





THE HIDDEN SWING DOOR OPERATOR

HIDDEN IN THE DOOR LEAF FOR AUTOMATIC DOOR OPENING

In the SOMMER Group, everything revolves around sophisticated radio and drive technology, e.g. in garage doors that open and close just like magic using radio signals. As Groke and SOMMER have been partners since 2004, it is no surprise that such technologies also make Groke doors even more efficient and convenient. Against this background, the installed swing door operator is a new highlight. It can be directly integrated into the door panel of leaf-concealing

doors. This makes it invisible in the elegant door design and accessible for fast maintenance work when required. Via radio signals with a safe low-voltage power supply, the front doors open silently: a clear advantage for older people and people with limited mobility – or simply as a convenience solution for the times when you have both hands full or you don't have the key ready.



TRANSPARENCY OR DISCRETION – THE LATEST GROKE FRONT DOOR OFFERS YOU A CHOICE

Sometimes people prefer a discreet atmosphere without the intrusion of curious glances. The “intelligent” glass of the Groke front door provides discretion in an instant – at the touch of a button! A revolutionary and innovative technology enables the glass in the door panel to change from transparent to a milky-white opaque.

The integrated, low-dazzle LED lights, which are available in different colours, also ensure a pleasant atmosphere in the entrance area. They light up the area when it starts to get dark and they do this with an extremely low energy consumption. A whole new world of doors.

OPENING VIA RADIO OR FINGERPRINT

FOR EXTRA BONUS POINTS IN TERMS
OF SECURITY AND CONVENIENCE

The newly developed, automatically opening and closing front doors from Groke combine intelligent radio technology from SOMMER and open up new functional dimensions. Having to search through your bag for your house keys after shopping or a trip away has now become a thing of the past. At Groke, this all works via radio or fingerprint identification. Customers can opt for a radio system with encoding technology that prevents people from listening or hacking in, or they can choose an even more individual solution with a fingerprint scanner ENTRASys FD. This system uses a state-of-the-art stripe sensor with an integrated navigation function and emergency master PIN. Up to 80 different fingerprints can be saved in the system.





THE POSTER CHILD
FOR EVERY
FRONT DOOR.

GROKE GIVES
YOUR FRONT DOOR
A PROFILE.





CONVINCING IN
DESIGN, TECHNOLOGY
AND FUNCTION.



GROKE TÜREN UND TORE GMBH | Wikingenstr. 10 | 76189 Karlsruhe
Tel.: 0721/59 82-0 | Fax: 0721/59 82-55 | info@groke.de | www.groke.de

A company of the SOMMER group